



SOIL TEST RESULTS

South Burnett



Soil tests were taken and analysed as part of the Burnett Catchment Care Association's "Invest in a Test" Project.

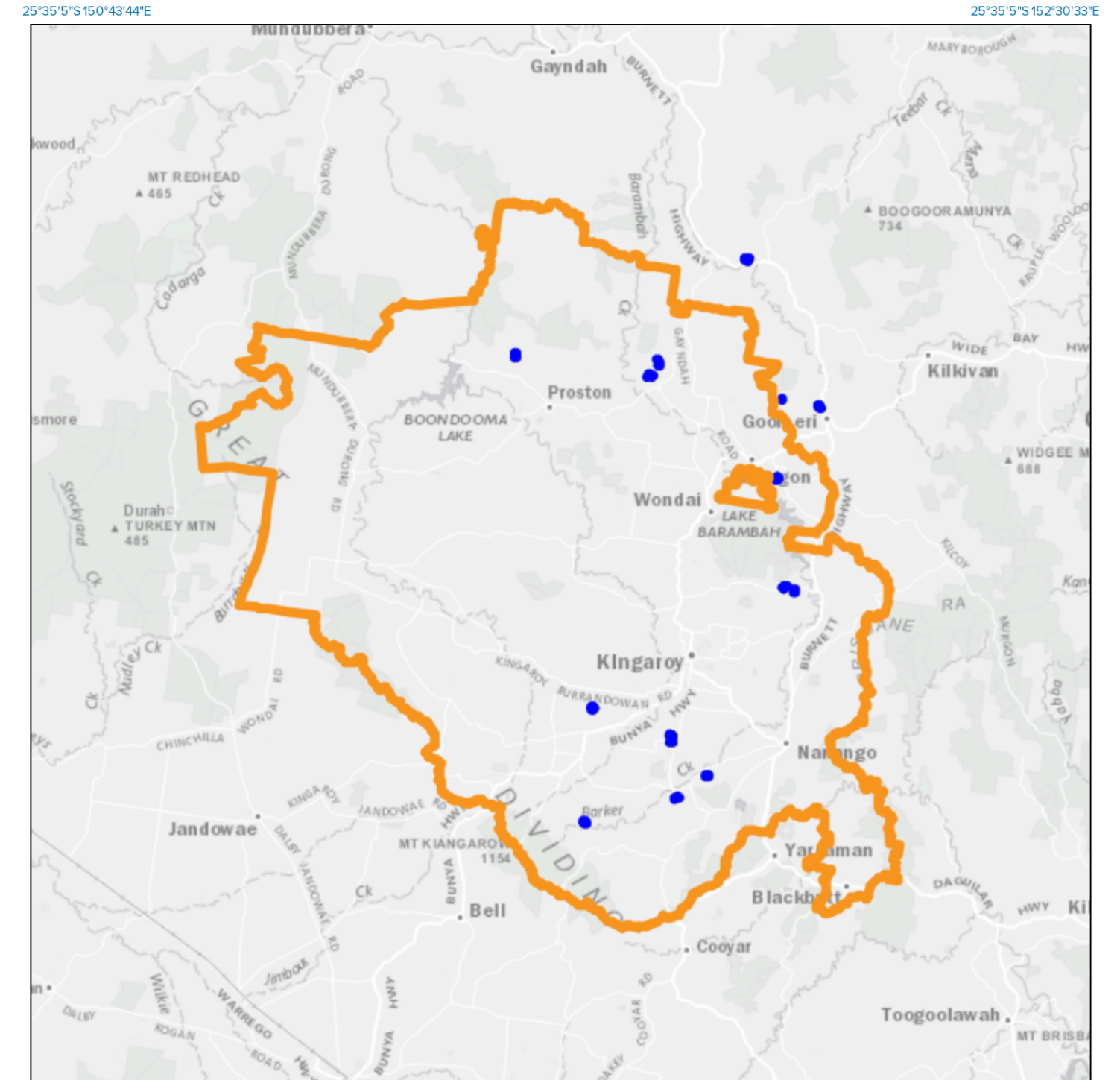
The soil tests were taken by David Hall Consultancy from numerous cropping and grazing properties across the South Burnett (and western Gympie Regional Council area) during 2022.

The exact locations are not provided and will not be made public however, localities indicate the vicinity of the soil tests.


Soil samples were taken from surface 0-10cm layer and the 10-60cm layer.

Compiled by: Katie Muller


© Burnett Catchment Care Association Inc., 2024



27°10'46\"/>

A product of  Queensland Globe


Legend located on next page



Includes material © State of Queensland 2024. You are responsible for ensuring that the map is suitable for your purposes. The State of Queensland makes no representation or warranties in relation to the map contents and disclaims all liability.

If imagery is displayed, imagery includes material © CNES reproduced under license from Airbus DS, all rights reserved © 21AT © Earth-i, all rights reserved, © Planet Labs PBC, 2023

Scale: 1:1000000
Printed at: A4
Print date: 3/4/2024
Not suitable for accurate measurement.
Projection: Web Mercator EPSG 102100 (3857)
For more information, visit <https://qldglobe.information.qld.gov.au/help-info/Contact-us.html>



Queensland Government
Department of Resources

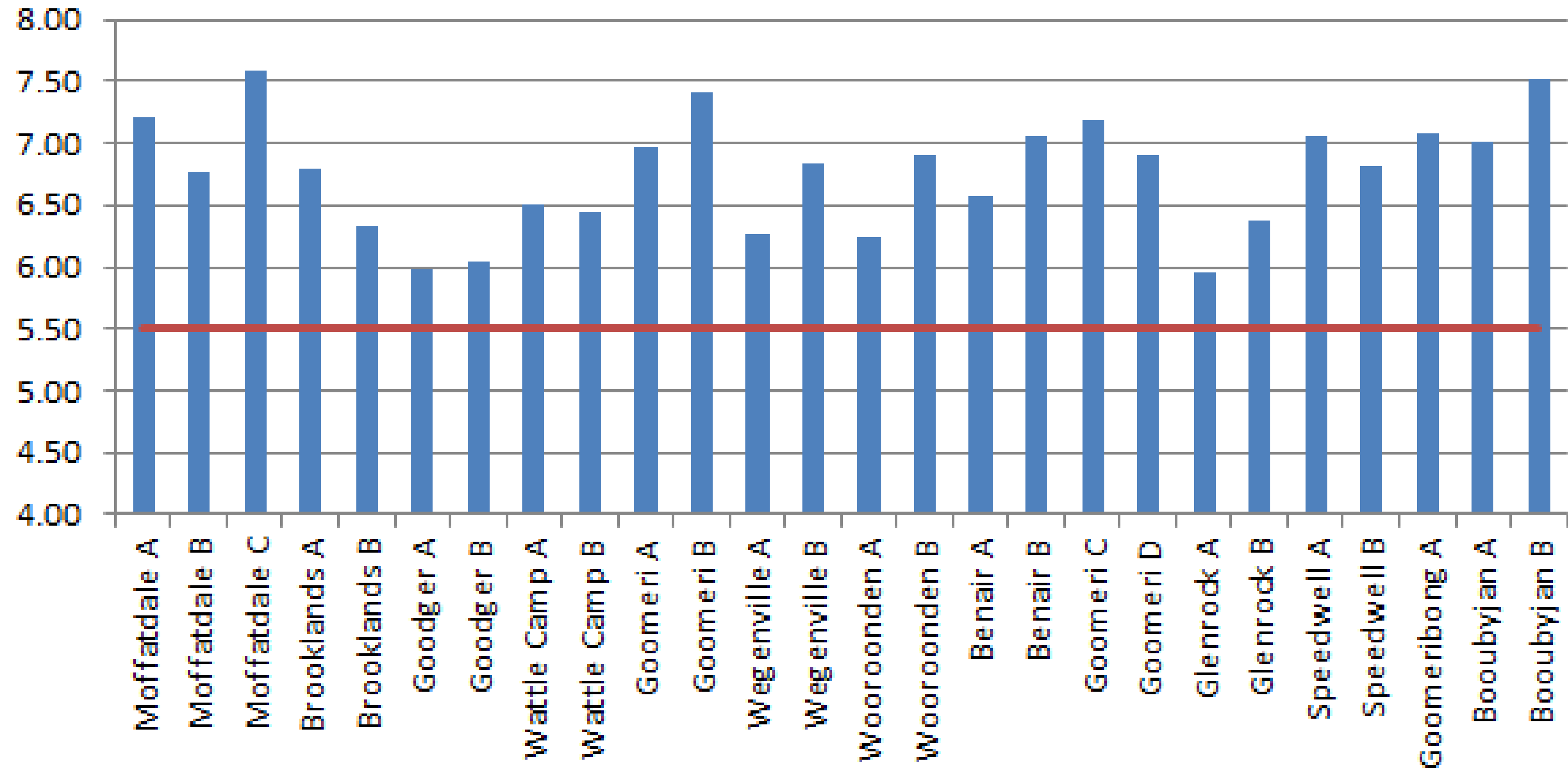
The following soil test results were graphed by David Hall and presented at the "Understanding Soils Workshops" held at Kumbia and Mondure in August 2022.

They have been reprinted by BCCA and are as follows:

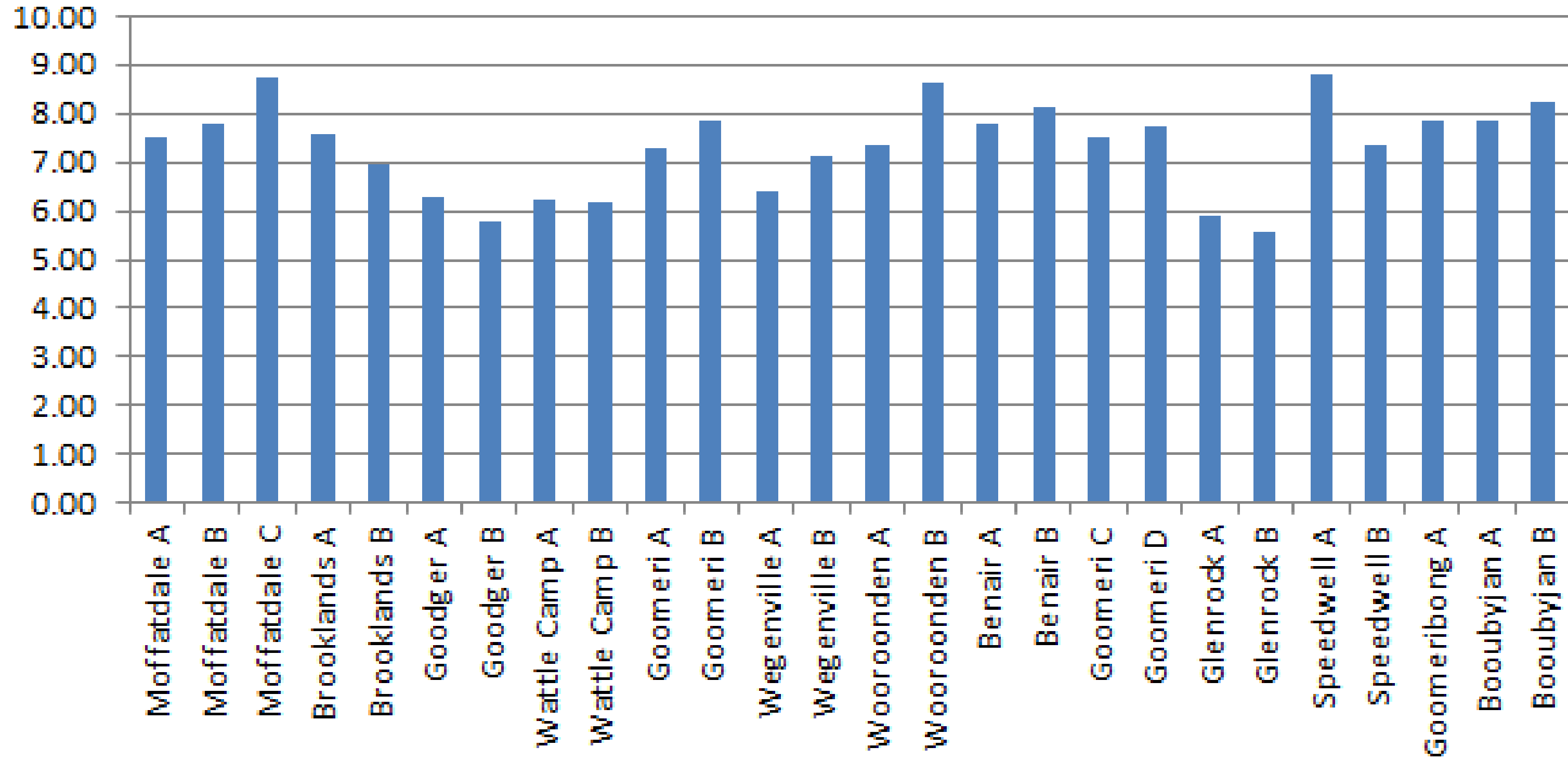
- Soil pH - Surface 0-10cm
- Soil pH - 10-60cm
- Electrical Conductivity (mS/cm) - Surface 0-10cm
- Electrical Conductivity (mS/cm) - 10-60cm
- Organic Carbon % - Surface 0-10cm
- Nitrate N weighted mean (kgN/ha) - Surface 0-10cm
- Nitrate N weighted mean (kgN/ha) - 10-60cm
- Phosphorus (Colwell) mg/kg - Surface 0-10cm
- Phosphorus (Colwell) mg/kg - 10-60cm
- Phosphorus Buffering Index (PBI) - Surface 0-10cm
- Phosphorus (BSES) mg/kg - Surface 0-10cm
- Cation Exchange Capacity (CEC) cmol(+)/kg - 0-10cm
- Sodium % - Surface 0-10cm
- Potassium (mg/kg)- Surface 0-10cm)
- Soil Zinc (mg/kg)- Surface 0-10cm
- Sulphur (mg/kg)- Surface 0-10cm
- Calcium Magnesium Ratio - Surface 0-10cm



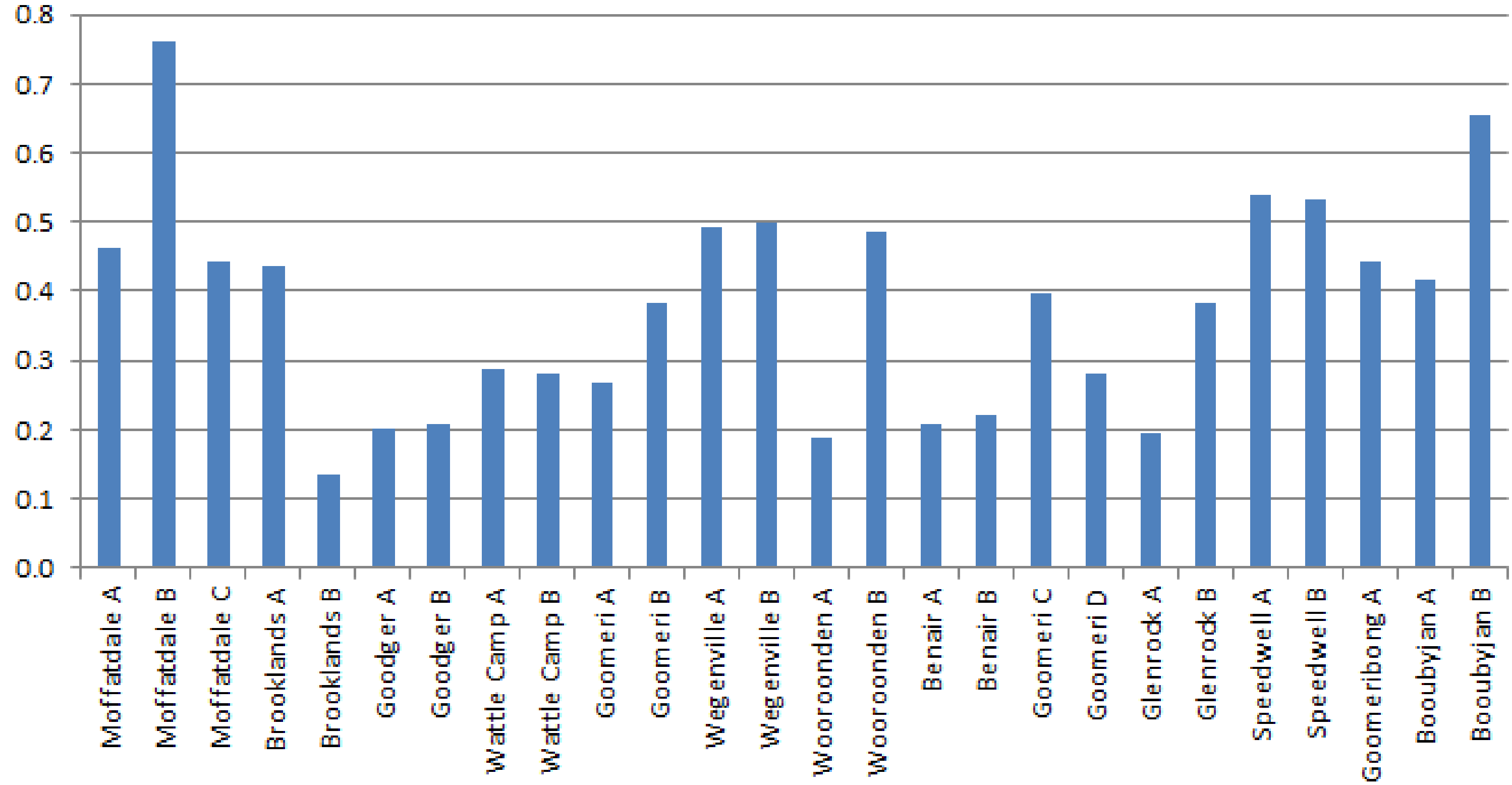
Soil pH (water 1:5) 0-10 cm



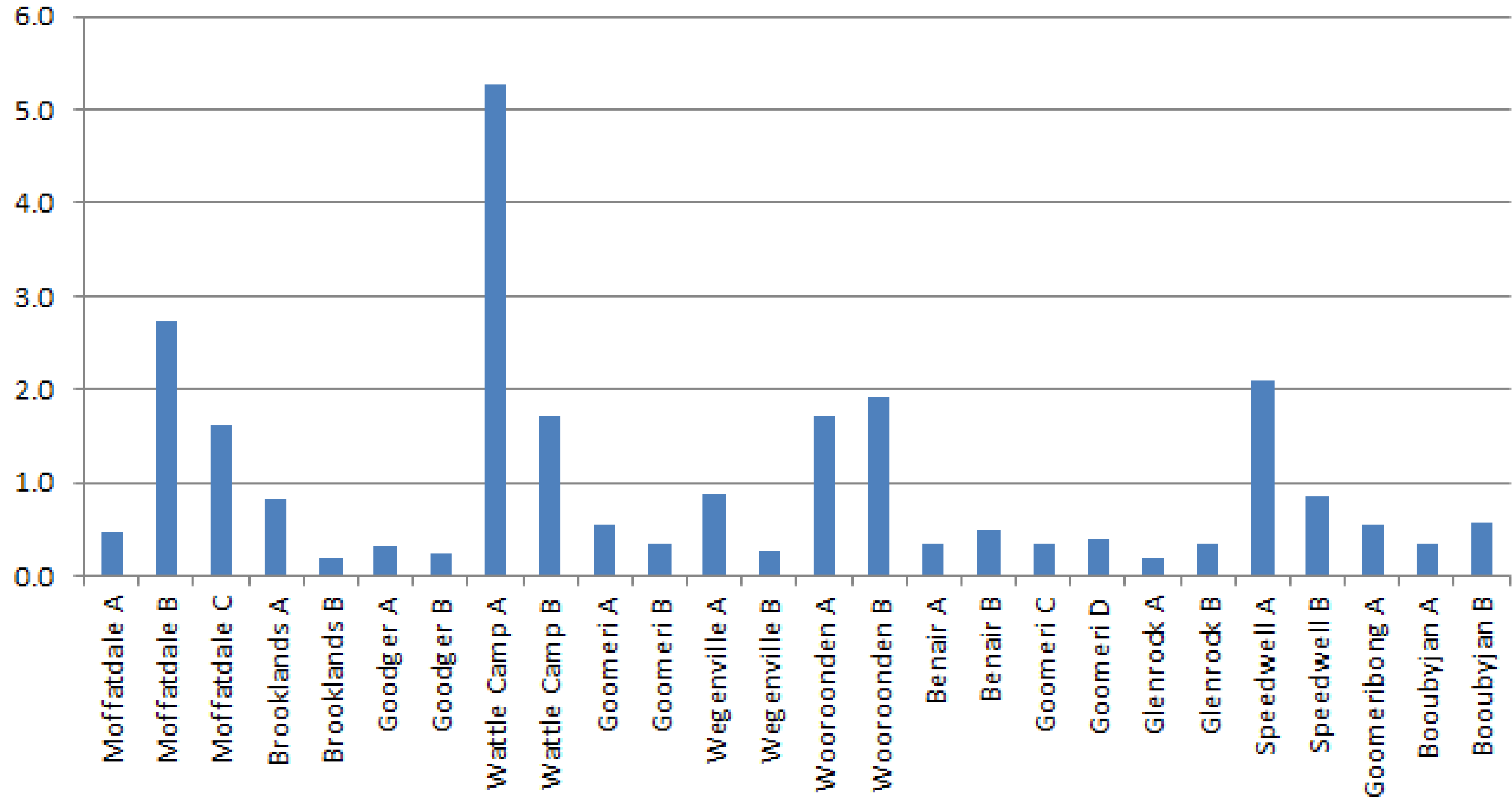
Soil pH (water 1:5) 10-60 cm



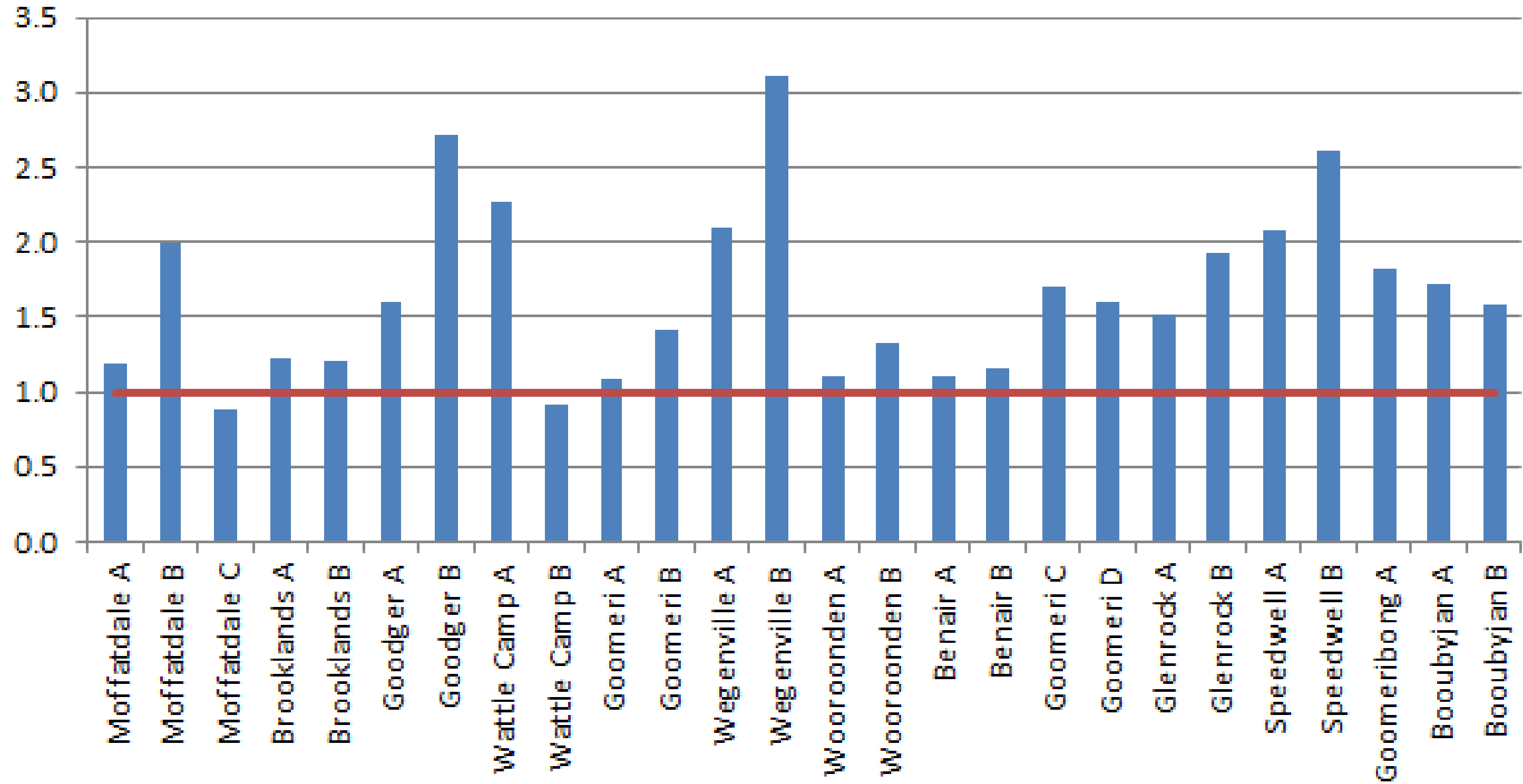
Salinity - Electrical Conductivity (se) dS/m 0-10cm



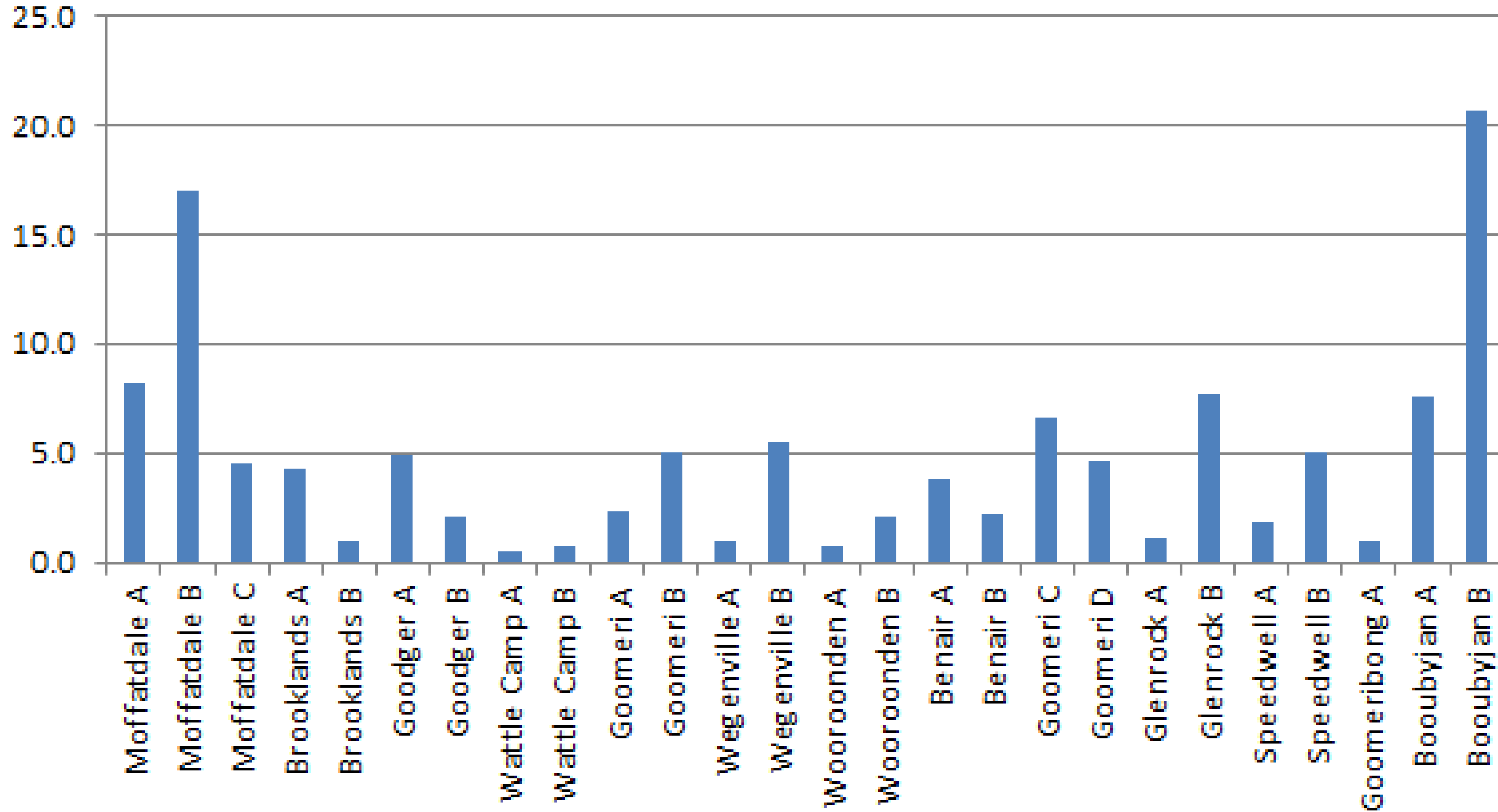
Salinity - Electrical Conductivity (se) dS/m 10-60cm



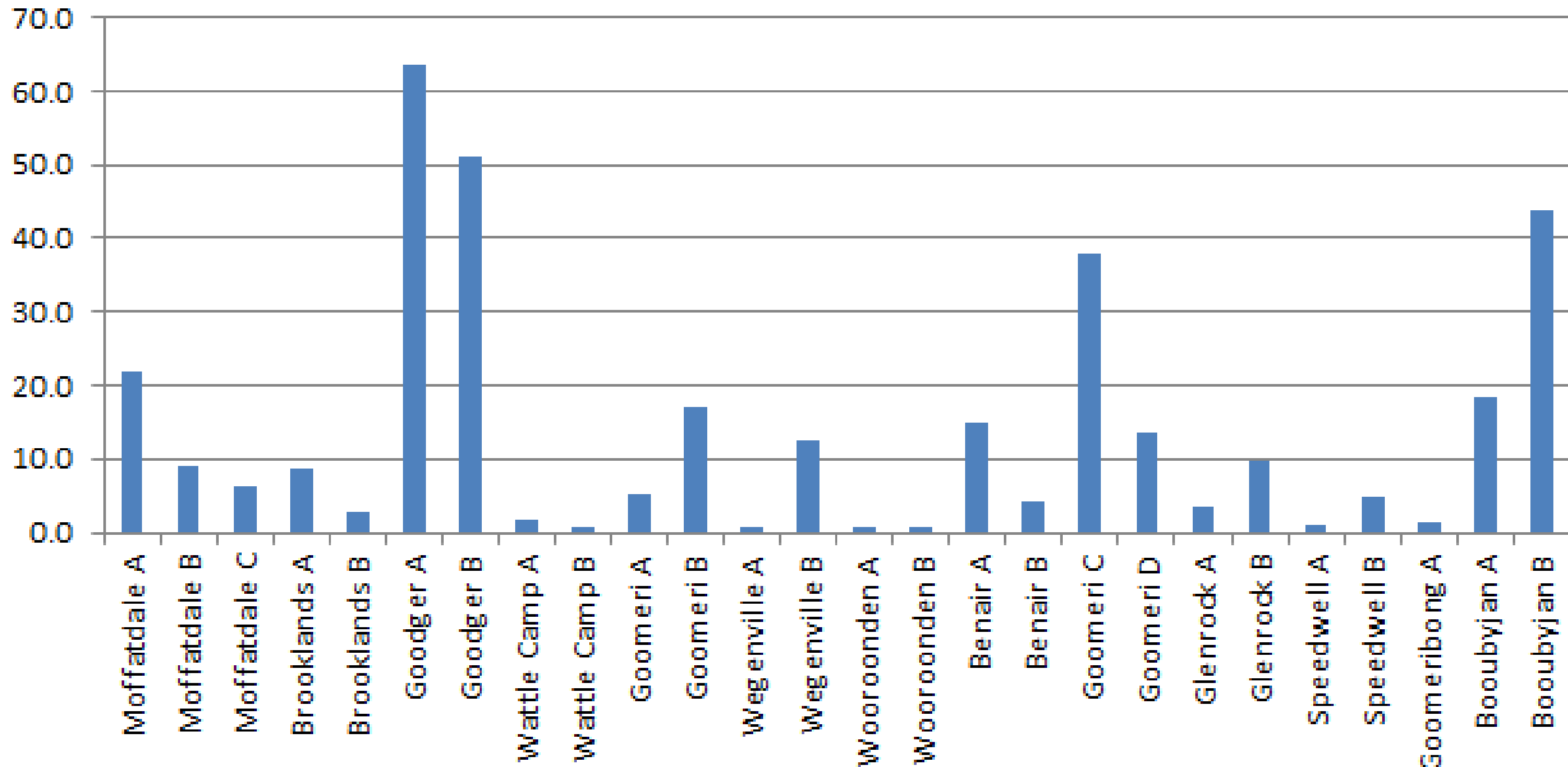
Organic Carbon % 0-10 cm



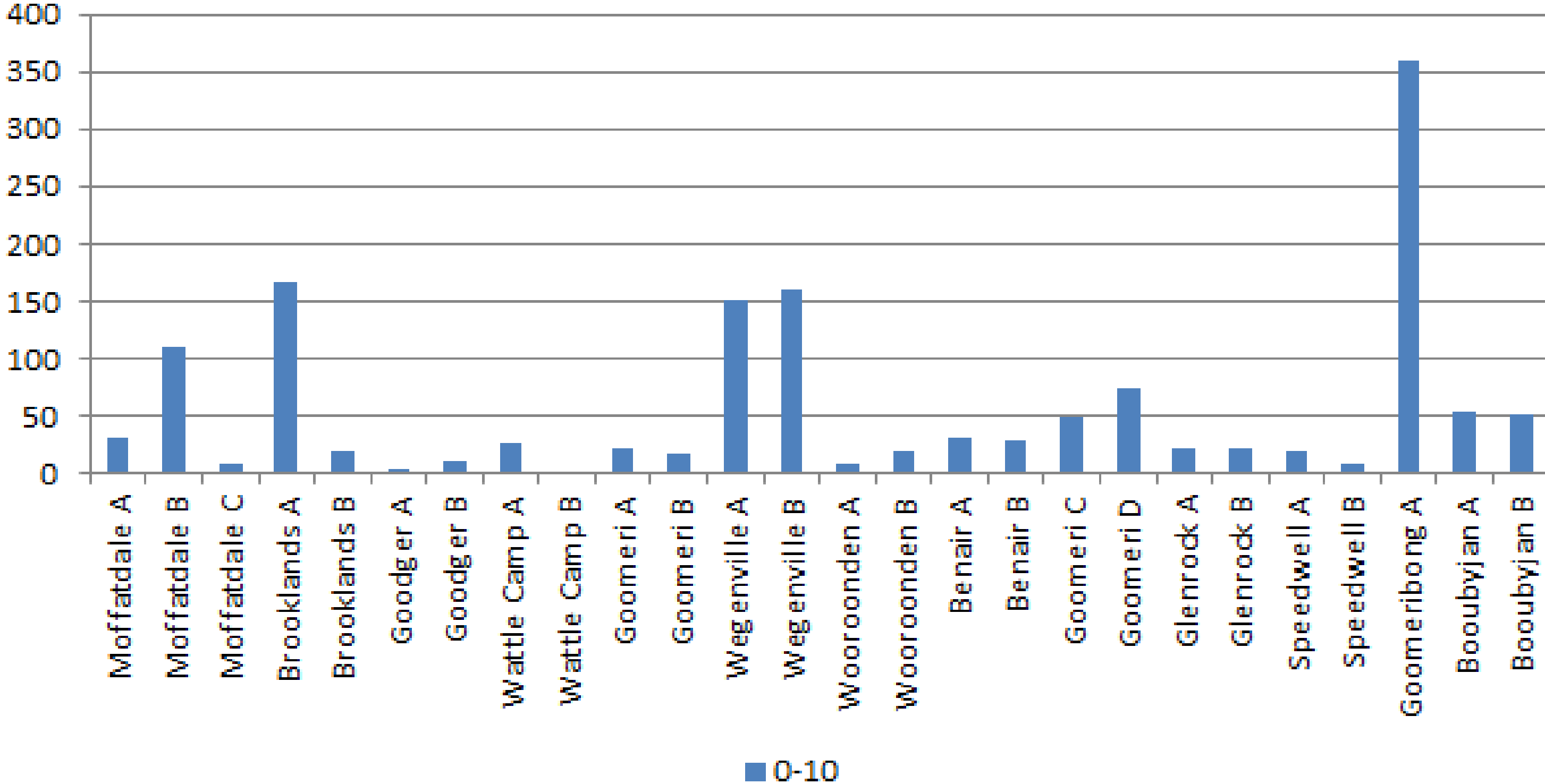
Nitrate N weighted mean (kg N/ha) 0 - 10 cm



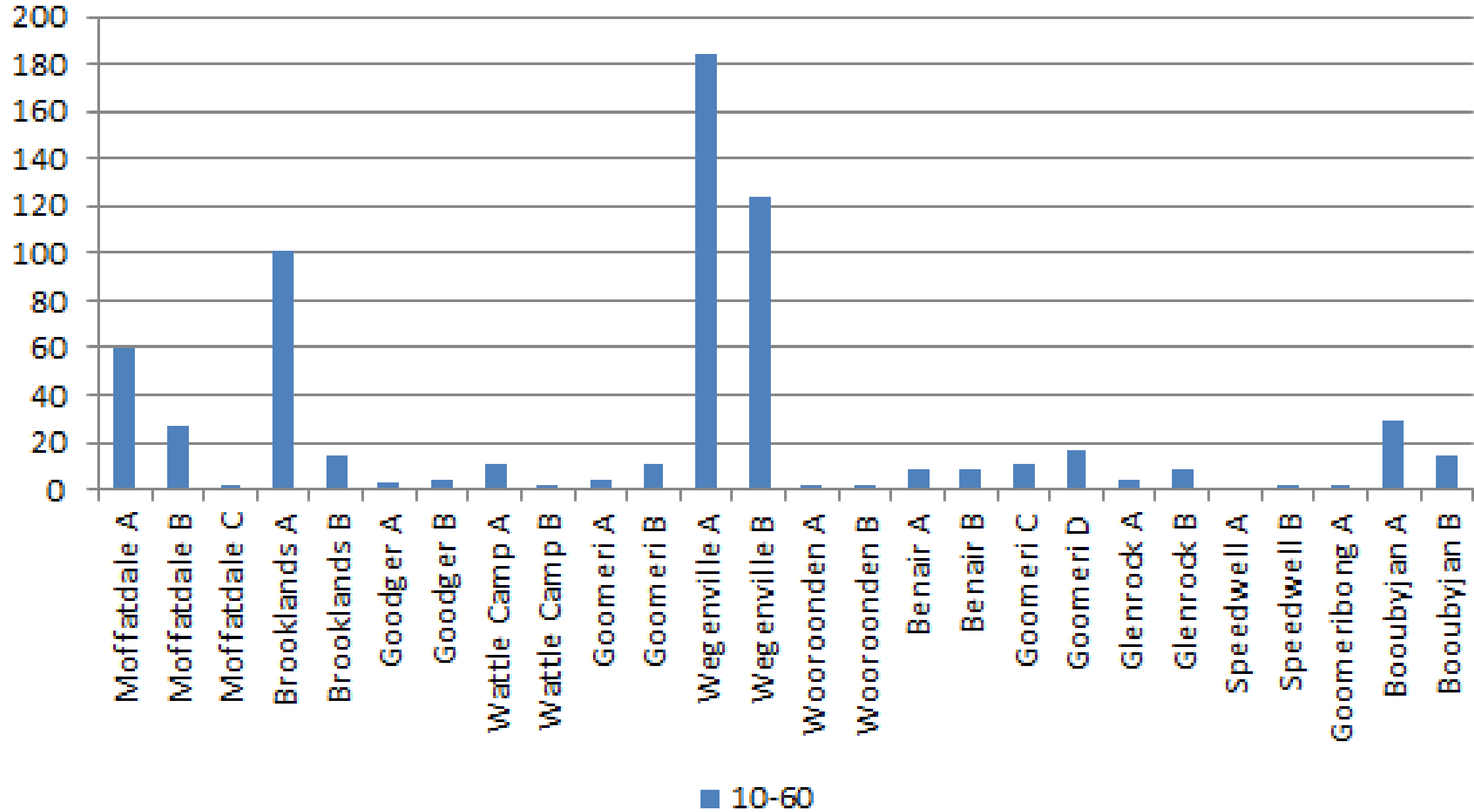
Nitrate N weighted mean (kg N/ha) 10-60 cm



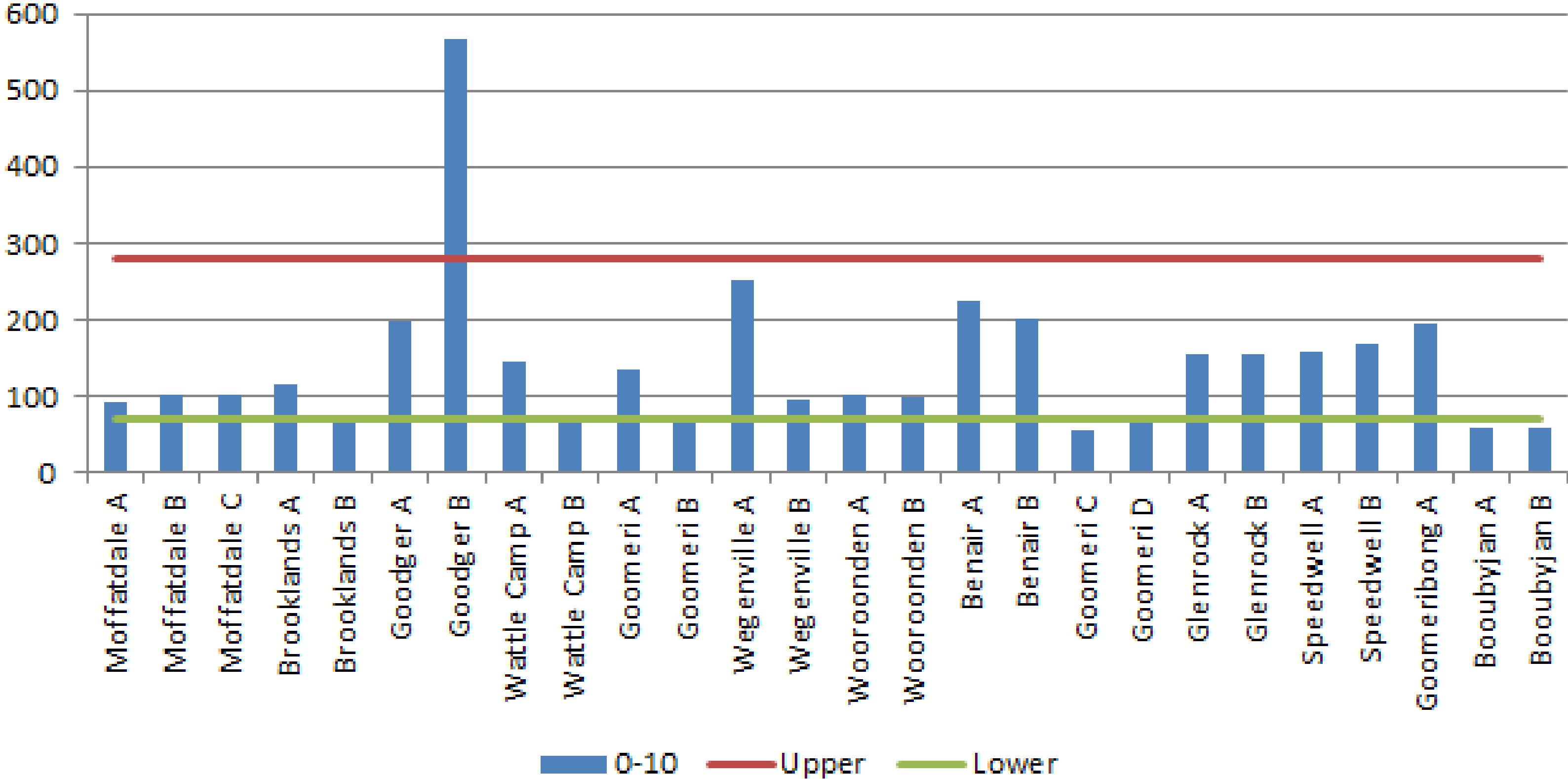
Phosphorus (Colwell) mg/kg 0-10 cm



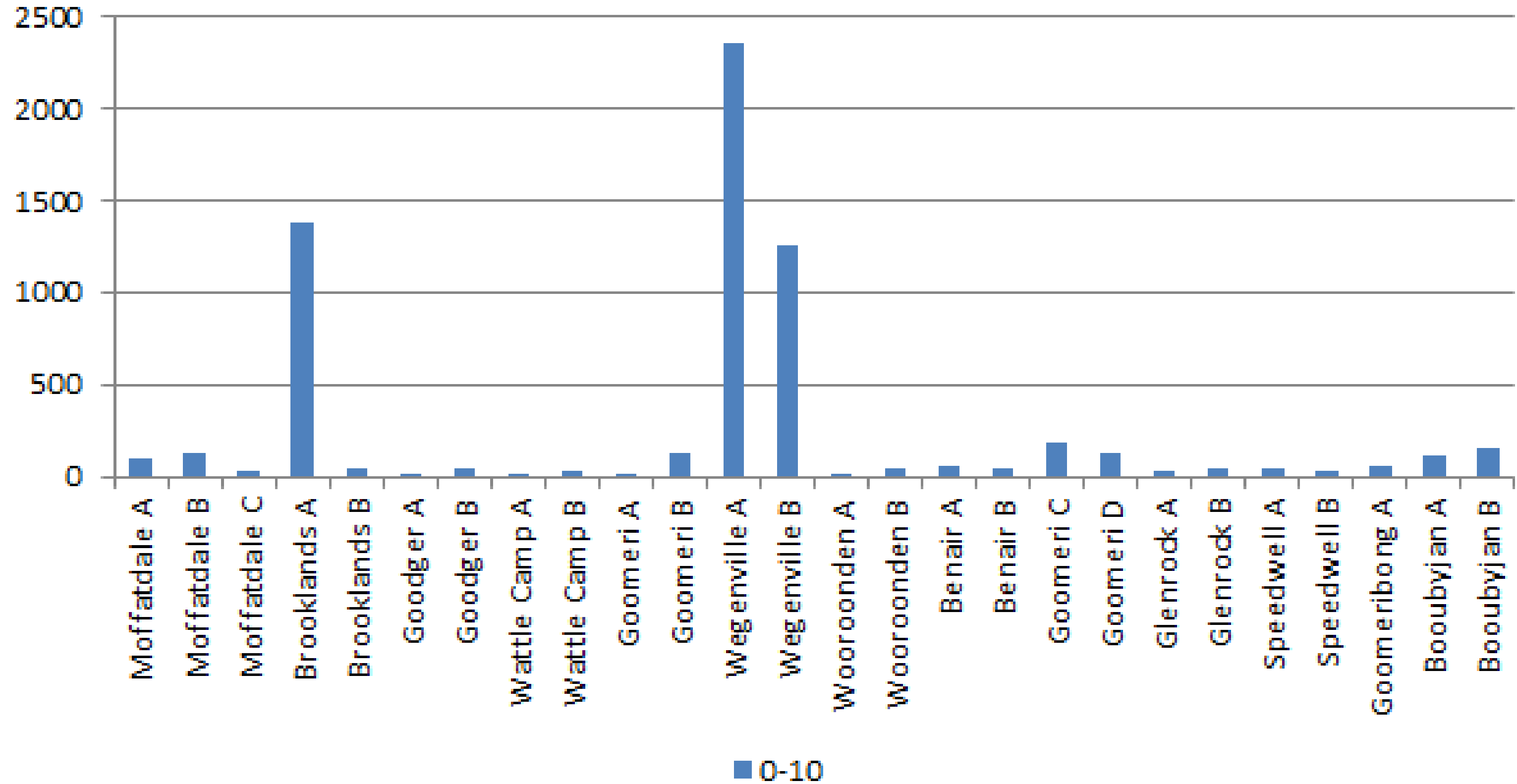
Phosphorus (Colwell) mg/kg 10 - 60cm



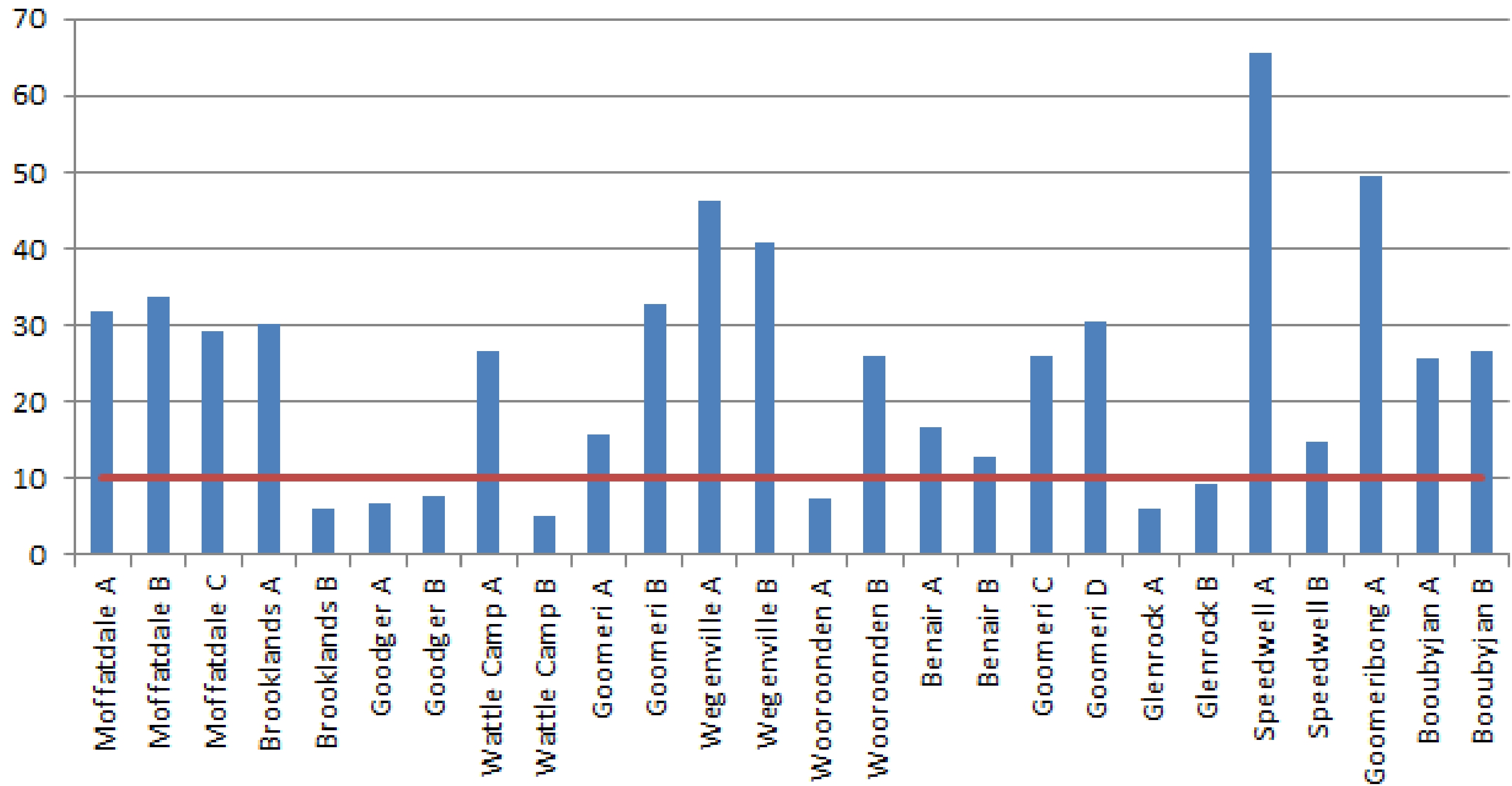
Phosphorus Buffering Index (PBI) 0-10 cm



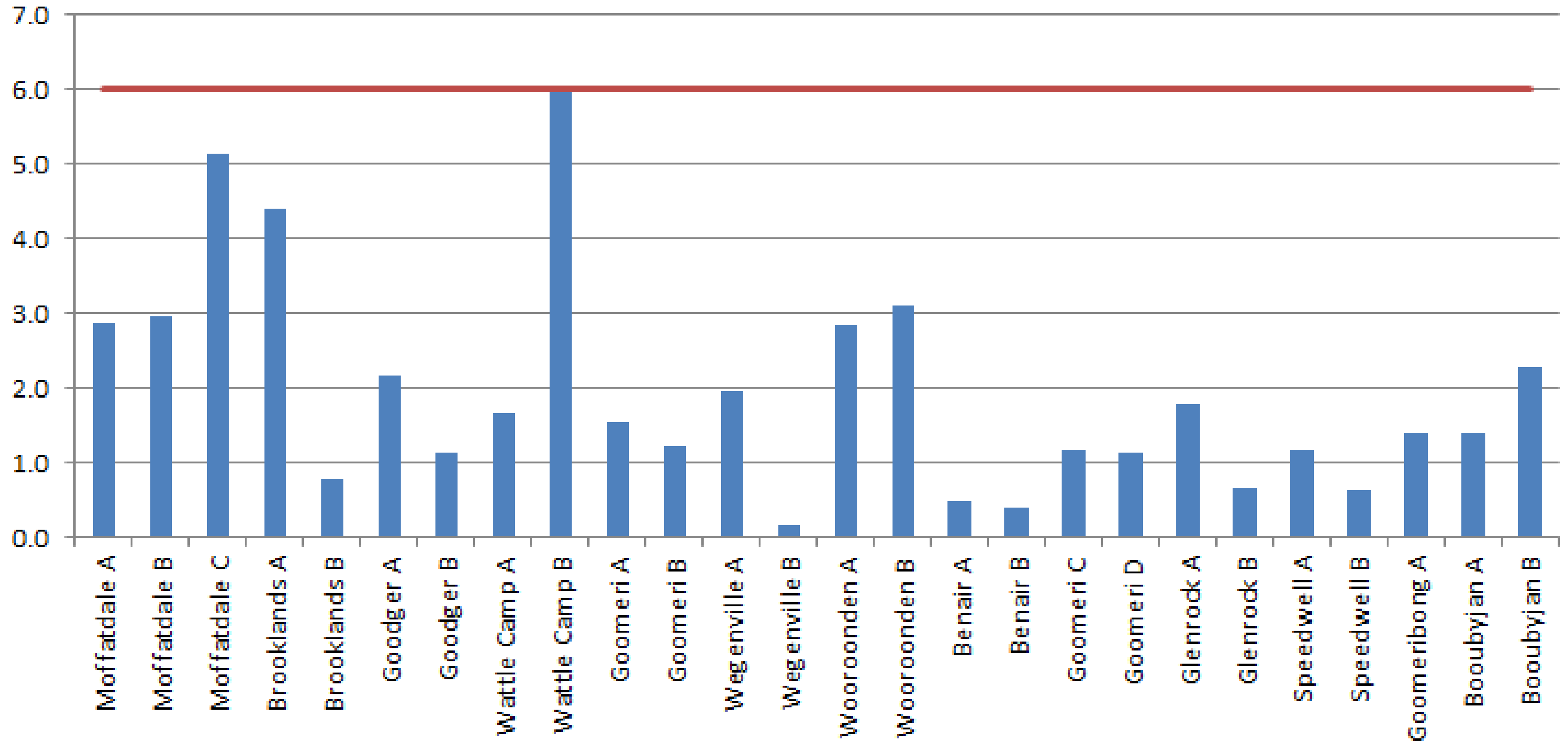
Phosphorus (BSES) 0-10 mg/kg



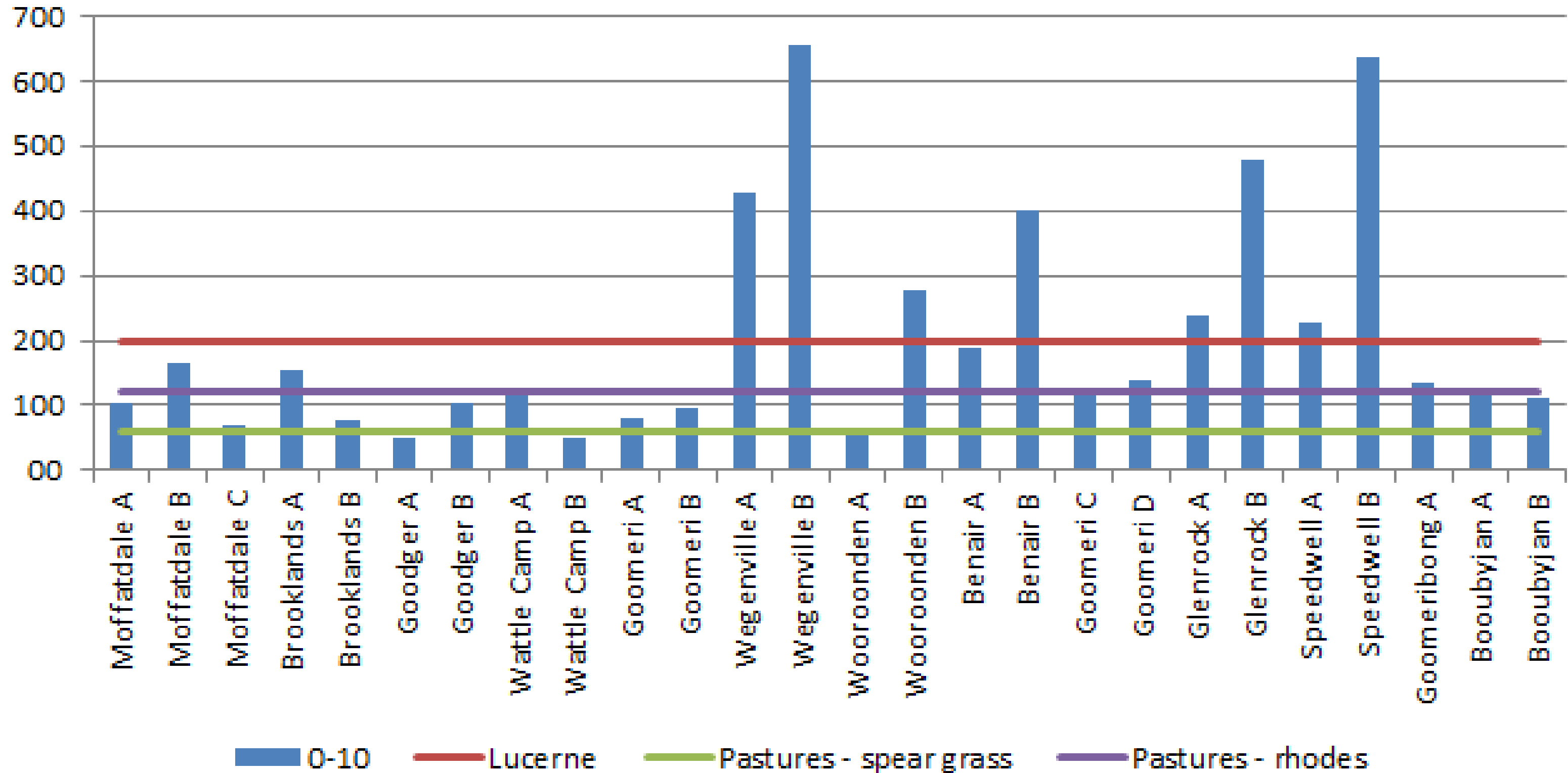
Cation Exchange Capacity (CEC) cmol(+)/kg 0-10 cm



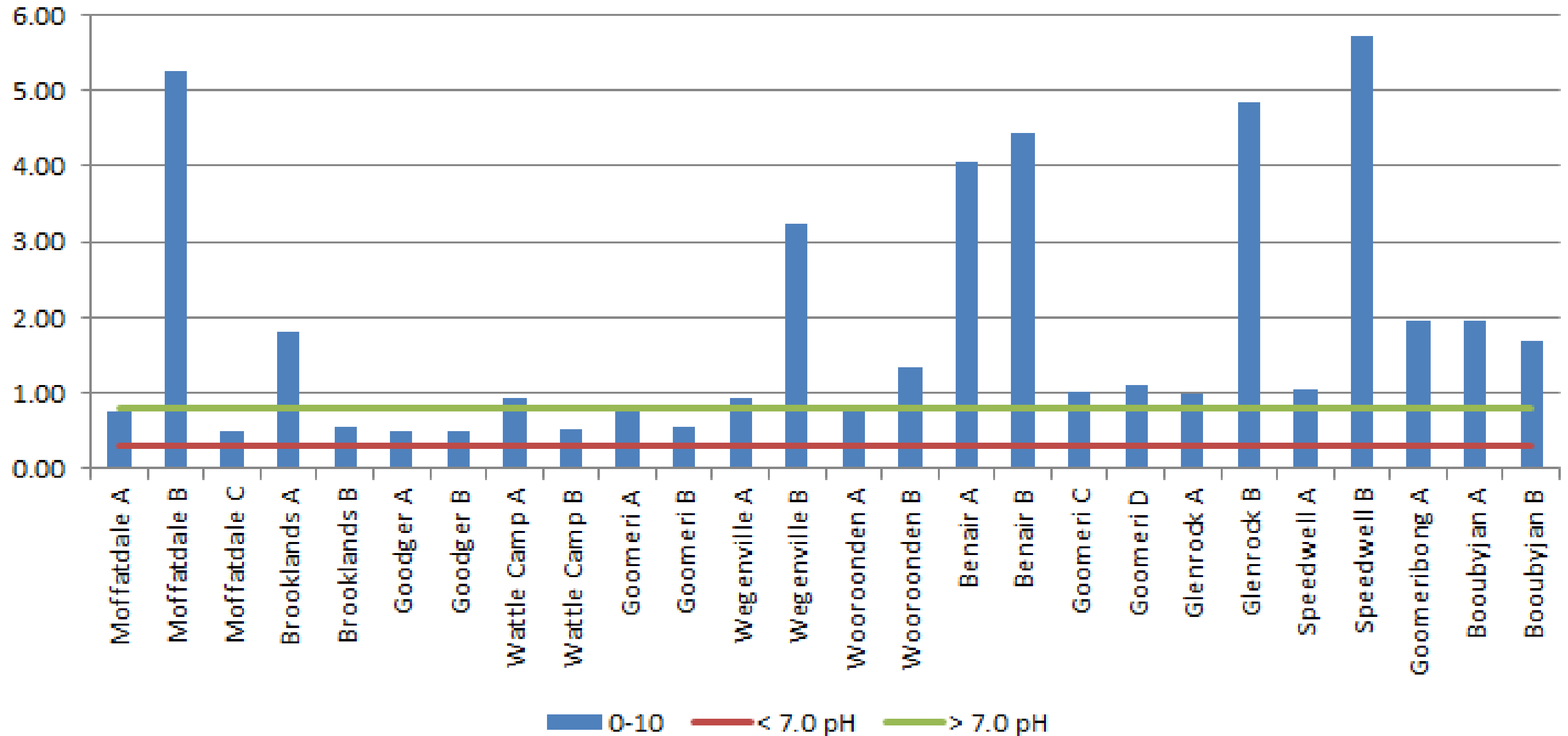
Sodium % - 0 - 10 cm



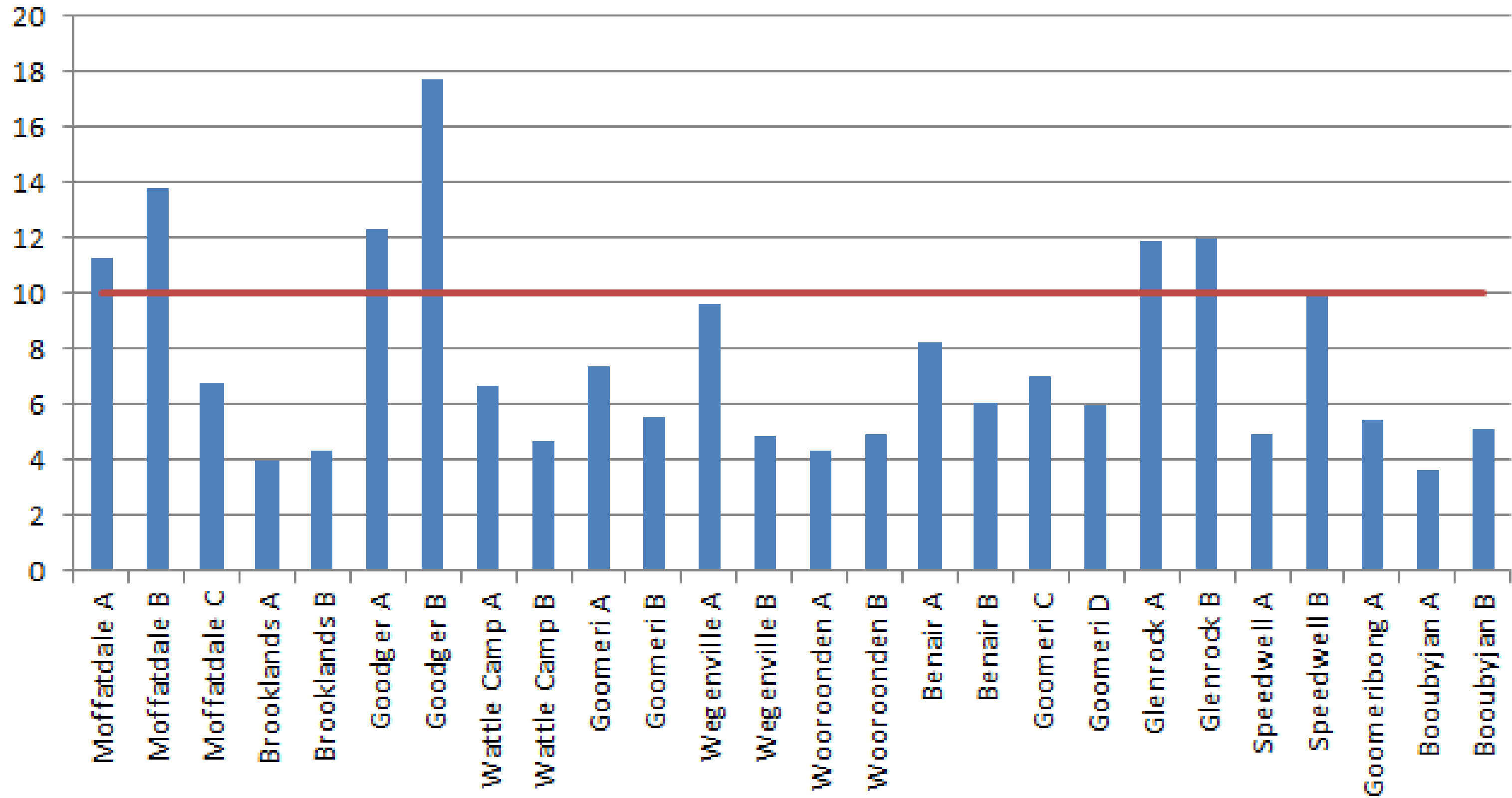
Available potassium (mg/kg) 0-10 cm



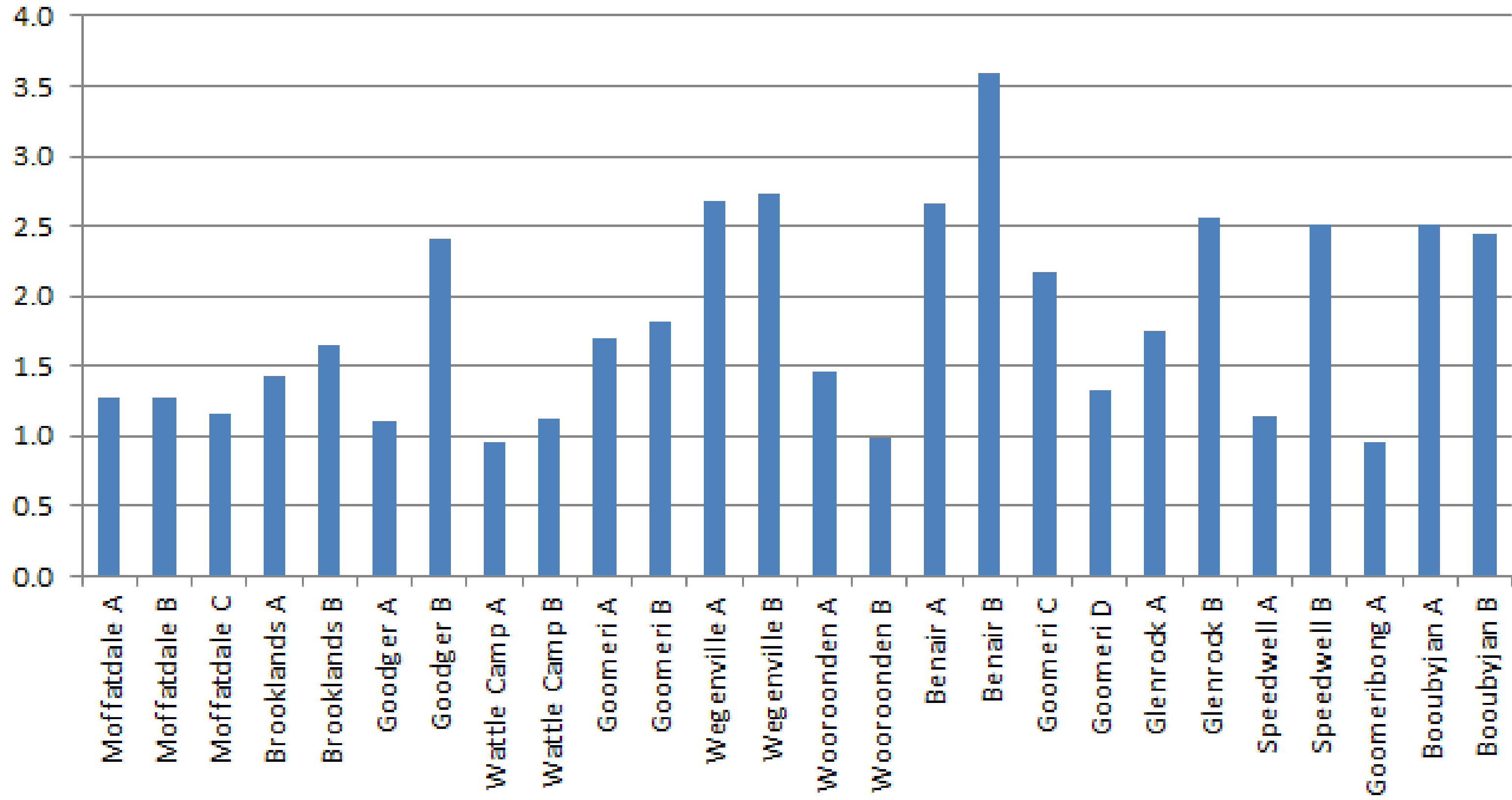
Soil Zinc mg/kg (0-10 cm)



Sulphur mg/kg (0-10 cm)



Calcium to Magnesium ratio (0 - 10 cm)



For more information and resources on soil testing:
www.burnettaghub.com.au/land/soils

This project is supported by the Burnett Catchment Care Association's
"Invest in a Test" project.

Funded by:
The National Landcare Program Smart Farms Small Grants: an Australian Government initiative

